

vicaima



# THE BUILDERS' GUIDE

Leaders in quality interior veneered doors...  
building solutions with Vicaima

# introduction



## **You get more with a Vicaima door**

In the challenging world faced by builders today, it is good to know that at least one product element can exceed expectations and meet the most demanding of requirements. Vicaima doors, frames and associated interior joinery products, are manufactured to the most exacting standards, both in terms of design and performance.

With a reputation for quality and innovation in all things, Vicaima create build solutions for homes and commercial projects alike. This Builders Guide has been produced to provide inspiration for interiors and open up the many possibilities that exist when using Vicaima door products.



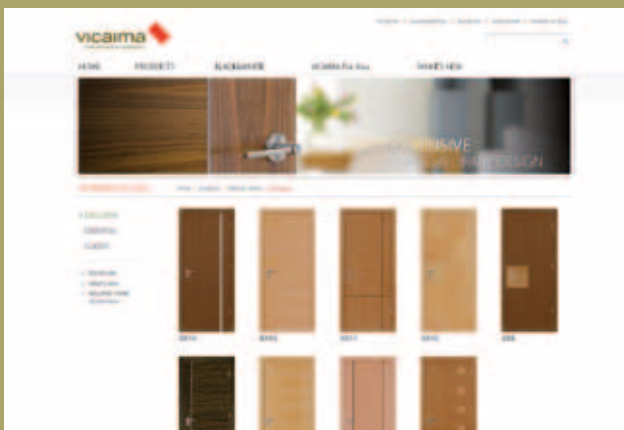
# customer support



dedicated  
sales  
support



training  
and  
workshops



online  
information &  
range advice



samples &  
presentation  
literature

## **Vicaima takes care of the detail**

As in all things it is often the small details that make the difference between a trouble free and successful project and one where precious time is wasted sorting out unnecessary problems.

Dealing with Vicaima means a different way of working. As door specialists, Vicaima staff is very knowledgeable about the requirements for doors and frames in the built environment. With help and assistance on hand throughout, the customer and technical support teams make specification, ordering and deliveries easy to manage.



scheduling  
& site  
call-offs



technical  
knowledge  
bank



#### FURTHER INFORMATION

Downloads at  
[www.vicaima.com](http://www.vicaima.com)



## **New build design solutions**

New buildings deserve new ideas and so Vicaima's blend of innovation mixed with tried and tested door quality provide the perfect mix. From contemporary to classic styles Vicaima create outstanding new build door solutions.

## **Self build – for that personal touch**

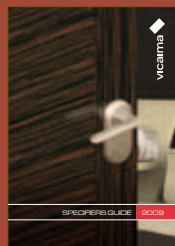
Designing unique interiors is easy with Vicaima. With the ability to blend colours, patterns, shapes and that all important personal touch, flexibility is the key ingredient on offer.



Steamed Beech EX5.1 (inlay 4)



Naturdor Maple



## FURTHER READING

Download our  
Specifiers Guide from  
[www.vicaima.com/specifiers](http://www.vicaima.com/specifiers)



## **Social Housing**

With safety, mobility, access and durability firmly in mind, Vicaima are able to tick all the boxes for demanding situations. Importantly all of this can be achieved without compromising on design, so interiors are no less desirable.

## **Refurbishment**

When it comes to refurbishing living space, few changes can make such a positive difference as the fitting of interior doors. Vicaima's range of design and performance products can transform rooms and make fitting easy and trouble free.





Naturdor Cherry



Dekorodor Walnut

## Leisure Sector

From hotels to restaurants Vicaima doors add that special ingredient to make rooms appealing and memorable.



### FURTHER READING

Download our Entrance Door Sets brochure from [www.vicaima.com/brochures](http://www.vicaima.com/brochures)

# door ranges



## **Vicaima door ranges**

Vicaima doors are available in 3 principle ranges, although the scope to work within them is almost limitless. These ranges include:

*Essential* – Pure simplicity in design, combining uncomplicated styling with quality finishes. The perfect blank page from which to create something special.

*Exclusive* – Representing the ultimate in contemporary door design. Blending cross directional veneers and contrasting inlays to make a truly modern decor.



Naturdör Ash



Dekordör Walnut



Oak Cepeldör



Oak CDW

# Essential



EX5.1 Ash (Inlay 6)



EX5.1 Cherry (Inlay 1)



EX5.0 Oak (Inlay 1)



EX5.1 Oak DFG17 (Inlay 1)

# Exclusive



Oak P2200



Oak P2400



Oak P2409



Oak P2402/P2602

# Classic

*Classic* – A real expression of elegance which helps to recreate traditional period features in both existing and new interiors.

**FURTHER READING**



Download our Red Book from [www.vicaima.com/brochures](http://www.vicaima.com/brochures)

# door ranges



## **Performance**

When it comes to performance Vicaima provide complete peace of mind. Manufactured to exacting British and European standards, products are tested and approved to relevant applications. Specifications include: Fire Safety, acoustics, thermal efficiency, environmental and access.



Oak Cepeldor



EX5.0/04 Steamed Beech

Download certificates and test evidence from our website [www.vicaima.com](http://www.vicaima.com)



### FURTHER READING

Download our performance set Portaro brochure from [www.vicaima.com/brochures](http://www.vicaima.com/brochures)

# natural veneers



## **Crown Cut Veneer**

Emphasising the natural wood grain pattern, Vicaima crown cut veneers are available in colours ranging from warm and light to rich and darker hues, including: Oak, Ash, Steamed Beech, Maple Cherry and Walnut.

## **Quarter Cut Veneer**

Offering a less flowery grain pattern Vicaima quarter cut veneers include: Sapele, Koto and Eucalyptus. Other veneers are available on request.



Steamed Beech Crown Cut



Maple Crown Cut



Zebrano SL



Cherry SL

## Straight Line Matching Veneer

Using the latest cutting techniques, Vicaima straight line (SL) veneers create striking evenly patterns for door design. With wastage minimized SL veneers enable otherwise expensive options to be reconsidered. These include: Cherry, Ebony, Oak, Teak, Walnut, Wenge and Zebrano.



## FURTHER INFORMATION

See our veneer range, visit [www.vicaima.com](http://www.vicaima.com)

# Lay-up veneers



## **Lay-Up Veneer**

The scope for door design can be greatly enhanced when grain direction is considered. Vertical, horizontal or a combination of both are available, using single or multiple veneer specie.





Oak CDV



Walnut CDV



### FURTHER INFORMATION

See our veneer range, visit [www.vicaima.com](http://www.vicaima.com)

# paint & stain finish

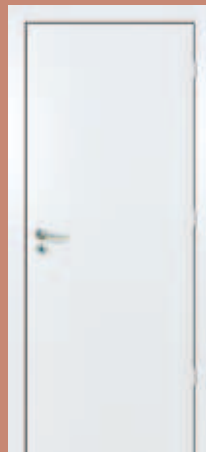


## **Painted or Primed**

Vicaima paintgrade doors create a smooth canvas for every colour scheme. Alternatively doors and frames can be provided with factory applied primer and fully finished paint, such as the Magic Colours range, for the ultimate finish without on site concerns.

## **Stained**

Combining colour and grain effect, Vicaima stained doors give a complete spectrum of opportunities. Subtle water based stains create striking statements, while allowing the beauty of the wood to show through and maintaining a consistent colour.



White



Wenge Stain



### **FURTHER INFORMATION**

Download our stain options from [www.vicaima.com/brochures](http://www.vicaima.com/brochures)

# woodgrain foils & laminates



## **Dekordor®**

The original alternative to moulded skin doors, Dekordor® foil finish ensures a totally consistent colour and grain configuration every time. Finish effects include: Oak, Ash, Beech and Walnut. In addition white and cross-directional Oak is also available.

## **Cepeldor®**

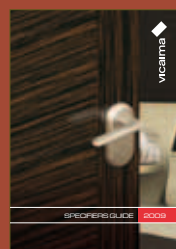
This tough laminate finish is hard wearing and scratch resistant, with protection from UV shading. Ideal for more demanding locations, Cepeldor® is available in Oak, Ash and Beech laminate effects.



Walnut Dekorador



Oak CDW Dekorador



**FURTHER READING**

Download our Specifiers Guide from [www.vicaima.com/specifiers](http://www.vicaima.com/specifiers)

just white



### **The Pure Range**

A white door is recognised by many interior designers as a feature that produces numerous decorative alternatives when creating attractive room interiors, as it can be used with both bold and understated designs.

The Pure Range from Vicaima is made up of a selection of timber doors in a brilliant white

finish, but offering a number of style options to meet individual tastes. These stunning doors are available in a tough Cepeldor® laminate, Dekordor® foil or smooth paint finish. The doors can be plain, glazed, grilles or openings and feature shallow grooves etched into the face of the door or embellished with decorative inlays to create a subtle but distinctive look.

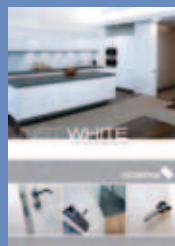


Just White PG3H



Just White PG4W

Available with Custom Fit Grooves or Inlays



### FURTHER READING

Download the Just White brochure from [www.vicaima.com/justwhite](http://www.vicaima.com/justwhite)

# custom fit



## Where options come as standard

Custom Fit introduces a range of design options for standard doors. Enabling different elements to be added to a base door and thereby transforming them into attractive and tailored features.

Custom Fit introduces a choice of design components including: frames, grooves, inlays and glazing from the Custom Fit range which Vicaima will provide to selected requirements, all with the benefit of shorter lead-times than bespoke doors and, of course, they cost less.

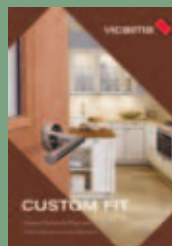




Grooved PG5P



Inlay and Grille DFG18



### FURTHER READING

Download the Custom Fit brochure from [www.vicaima.com/pricelist](http://www.vicaima.com/pricelist)



## Where options come as standard

Five design components to choose from:

### OPTION 1: DOOR FRAMES

The Vicaima Easi-Kit interior door kit allows you to select either a front entrance or room access frame kit for quick an easy on-site assembly.

### OPTION 2: INLAYS

Contrasting inlays for contemporary styling with either colour or veneer detail. Inlay is also available integral to beading for glazed options.

### OPTION 3: GROOVES

Incorporating etched patterns into the face of the door to produce geometric designs. Grooves can be stained in a range of colour options to give contrast as desired.



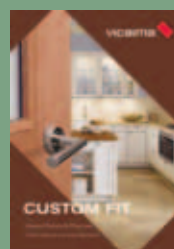
DFG04



DFG16

## OPTIONS 4 & 5: DECORATIVE GRILLES AND COMMERCIAL GLAZING

Bring light and visibility to your chosen door design with both openings and grille options. All doors are supplied factory glazed for ultimate quality, safety and performance.



### FURTHER READING

Download the Custom Fit brochure from [www.vicaima.com/pricelist](http://www.vicaima.com/pricelist)



## **Environmental door kits**

The rapid build, FSC certified interior door kit, combining door, frame, architrave and essential ironmongery with real environmental credentials.

Modern building methods are bringing about a complete re-think in the way interior

doors and frames are installed in homes and commercial premises nationwide.

Meeting continuing demands for the reduction of build time and coping with the shortage of skilled labour, Eco-Frame offers a credible alternative to separate door and frame installation.



White MR primed MDF or foil/white wrapped in non-fire and fire including Secured by Design front entrance door systems

## Colour options

Available white primed, white wrapped or veneered/foil wrapped.

## FURTHER READING



Download the Eco-Frame brochure from [www.vicaima.com/brochures](http://www.vicaima.com/brochures)

# entrance door sets



## **Front Entrance Systems**

A choice of high security PAS 23/24 and multi-purpose secure entrance door sets are offered by Vicaima. Ideal for use in apartments or multi-occupancy dwellings, these sets provide options in fire rating, acoustic performance and locking systems.

Designed to accommodate a wide range of structural openings and meeting recognized industry standards.



Naturdor Koto



Naturdor Sapele



## FURTHER READING

Download our Entrance Door Sets brochure from [www.vicaima.com/brochures](http://www.vicaima.com/brochures)



## **Performance Door Kits & Sets**

Vicaima offer a comprehensive range of door kits and sets to suit a multitude of locations and applications. Configurations include single and double leaf, with or without over-panels, together with conventional opening or sliding options. Metric and imperial dimensions can be accommodated, together

with extra wide doors for improved access. Where required room height systems are also available. A full range of accessories are available with all Vicaima kits and sets.





DFG04



DFGT16



## FURTHER READING

Download our performance set Portaro brochure from [www.vicaima.com/brochures](http://www.vicaima.com/brochures)



## **Wardrobes, Paneling & Skirting**

Versatility and verve are the hallmarks of the Vicaima bedroom furniture range.

With both simple and striking wardrobe options, in a multitude of finishes and model configurations, the possibilities are endless.

Wardrobe doors in hinged opening or sliding formats make immediate impact in any room, revealing inside the quality and attention to detail. And for a final touch a selection of customized accessories complete the assembly.



For a completely matching room Vicaima can provide a range of room paneling and skirting options to compliment the interior.



#### **FURTHER READING**

Download the Wardrobes brochure from [www.vicaima.com/brochures](http://www.vicaima.com/brochures)

# projects

## apartments & homes



### **Avon Castle, Dorset**

*Project:* Luxury Homes

*Doors:* Cross Directional Oak

## refurbishment



### **RAF Innsworth, Glos**

*Project:* MOD Living Accommodation

*Doors:* Ash Naturdor



### **Amicus Horizon, Surrey**

*Project:* Housing Assoc. Apartments

*Doors:* Oak Naturdor

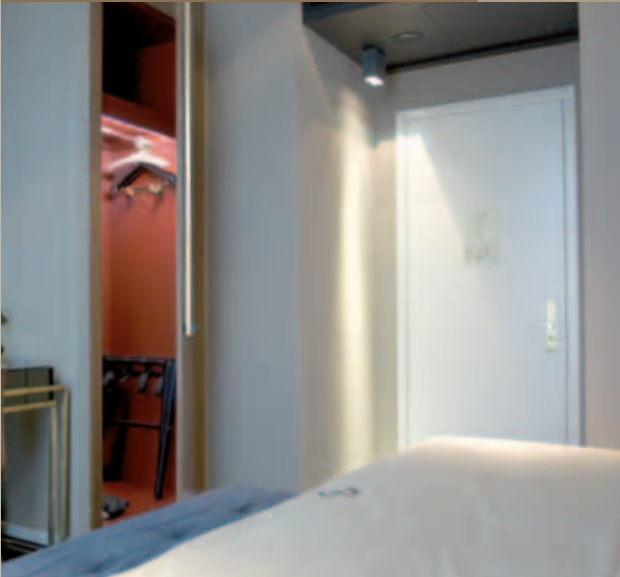


### **St. Martin's Church, Dudley**

*Project:* Conversion

*Doors:* Exclusive EX5.1

hotels & leisure



**Altis Avenida Hotel, Lisbon**

*Project:* Boutique Hotel

*Doors:* Matt White Finish

healthcare



**Docklands Medical Centre, London**

*Project:* Health Clinic

*Doors:* Ash Veneer with Eco Frame



**The Edge Holiday Homes, Cornwall**

*Project:* Boutique Leisure Homes

*Doors:* Easi-Fit Door Kits



**Margaret Court, Stratford**

*Project:* Retirement Home

*Doors:* Exclusive EX5.1

# tried & tested

secured by design



fsc certified



fire performance



sound reduction



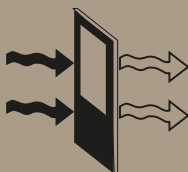
mobility & access



quality controlled



thermal resistance



BS Performance



# vicaima



Vicaima Ltd  
Drakes Way Business Centre,  
Marlowe Avenue, Greenbridge Ind. Est.,  
Swindon, Wiltshire SN3 3JF  
Tel: 01 793 532333  
Fax: 01 793 530193  
e-mail: [info@vicaima.com](mailto:info@vicaima.com)  
Web: [www.vicaima.com](http://www.vicaima.com)

Veneer, laminate, foil colours and photography are shown as a guide only. As we are constantly improving our product range, we reserve the right to make changes without prior notice. These details do not form any contract and whilst every effort has been made to ensure accuracy, this cannot be guaranteed.

Issue date April 2011. Designed by Lundie Marketing. [www.lundie.co.uk](http://www.lundie.co.uk)